

**User manual
of touchscreen wireless remote switch**



This product is based on the International Electrotechnical practice and using the most advanced electronic circuit design of home and abroad performance is more stable, quality is more reliable

Before the installation, please read the following instructions

First, the scope of application:
Home, office, shopping malls, hotels, hospitals, warehouses, and other places of the lamp lighting control and similar electrical control.

Second: Functional characteristics:
Assorting our company's scenes remote control can be realized: delayed on, delayed off, entertainment, total open, total off, and other functions, but also by telephone controller, host anti-theft alarm, computer controlled remote telephone or The computer-controlled home appliances on or off. with the company's 88 free wireless remote control can be affixed to the realization of double-control function in the stairs switch (or bed room switches)

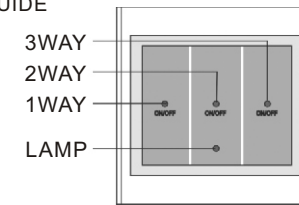
- 1, Facilitate installation ---- standard 86 wall-switch design, no need to connect zero line, without any changes to the access to the lamp parts, can be directly replaced the original wall switch;
- 2, Applying lamp ---- Accessed fluorescent lamps, energy-saving lamps, incandescent lamps, spotlights, halogen lamps, and other common lamp
- 3, Lightningproof Design ---- with Lightningproof function, safe and reliable at performance;
- 4, Partition remote control ---- Can be carried long-distance wireless remote control in partition (control the lamp in living room even you sit in the hall);
- 5, non-interfering ---- Use digital code technology, No direction, will not interfere neighbors using the same model products
- 6, self-extinguishing ---- Light stop, switch off automatically to avoid a waste of electronic energy;
- 7, Two-way control ---- can be used to the wall switch control, remote control can also control the using is more convenient;
- 8, Centralize control ---- on a multi-button remote control can centralize control the digital remote control switch of the whole family.
- 9, Group control function ---- allows a remote control button to control the many road lamps at the same time, On and off simultaneously
- 10, With a total on and off ---- remote control can set freely for the button of total on and off., press a button easily, be able to open or turn off (participate in distance learning and control all the lamp within the scope)

- 11, Intelligence identify --- switch can learn and identify any of the remote control from our company. remote control and switch do not have to buy matching, customers can select freely, upgrade freely and configure by own

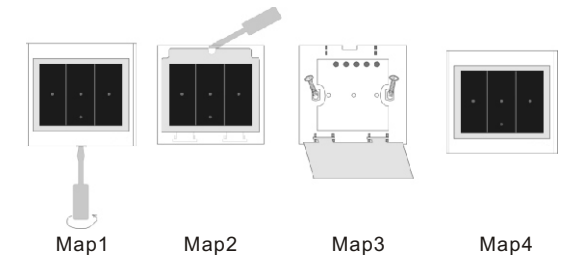
Unique features Comparing to the product with others

- 12, Normal work of at the condition of wide-voltage 180-250V
- 13, Match lamp freely, No need to increase compensation capacitor, when using energy-saving and fluorescent lamp, No flicker-free phenomenon;
- 14, Ultra-low-power design, standby power consumption: less than 0.006W, Calculate based on 1 degree = 1 kWh, the one year power consumption = (0.006W × 24 hours × 365 days) ÷ 1 kWh = 0.053 Electricity (less than 1 degree in 18 years);

Third: FUNCTION GUIDE



Four wire connection installation guide for touch screen switch.



1. The connection mode must handle in strictly accordance with the wiring diagram in backside of switch
2. According to the map 1, use the screwdriver with the small flat cutting, revolve as left or right direction after insert, remove the panel.
3. According to the map 2, Use the screwdriver to prize display clamshell, show the fixed screw hole of switches;
4. According to the map 3, put the switch into the box in the wall, fix it with screws, and
5. According to the map 4, install the display clamshell and panel as previous

Warmly reminder:
Please connect power after the installation according with the wiring diagram in the backside of switch. switch has own red (LED) indicator light flashes once, said that the line is in good connection, switch enter into the state of the work, can be handled as following:

Five, Learning method of on, off, the total on, total off and clearance code for 1 one-button remote control

1. learning method for on and off of one-button

At the condition of turning off all the lamp, press one-way switch long time, the 1 way lamp will light) until leaning indicator light of the panel flashes, then release. then press one-way button in the remote controller (As "A" key), the learning indication led will be shining one time. At this point press A key, the light will be off, and then again press the A key, light again turn off, that means the learning is succeed.
Note: (the method is same on learning of 2 way and 3 way.)

2. Learning of total on and off

A The learning method of total on:
At the status of 1 way lamp on and 2, 3 way off, press the 1 way switch, (at this time the 1 way, 2 way, 3 way lamp will turn off), release till the learning indicator light flash 2 times, press again the key which need to be learned as "total on" (as C) key, the learning indicator will light 1 time, then press C key, all the 3 ways lamp will light. press again C key, all the lamp keep turning on status, that means learning succeed.
Note: The total on key is only using for turning on the light, will not turn off the light.

B: The learning of total off key
At the status 1 way lamp on and 2, 3 way lamp off, press 1 way switch (at this time the 1, 2, 3 way lamp will be off), release till the learned indicator light flash. press again the key (as D) which has to be learned as "total off" key, the indicator led will flash 1 time, then press "total on" key C. (or turn on the 3 way lamp manually, press D key one time, all the 3 ways lamp of this switch will be turned off simultaneously, press again D key, all the lamp will keep off status, it means learning succeed.
("Total off" function key is using for off light only, but cannot turn on the light)
Warmly reminder: Any button can be operated according the set up as On, Off, total on, total off

4. The code clearance of switch
At any status, press the manual switch of any way till indicator light flash 3 times, then release. it will clean all the remote control code which the switch has learned this time.
(Note: Only use handswitch after code clearance, if you want to use remote controller, it needs to relearn the code)

Warmly remind
a, The factory set up "Total on key" as total on, "Total off" key as "total off". "1" key as 1 way lamp, "2" key as the second way lamp, "3" key as the third way lamp (the other key at multi-controller will be as space key, can use to learn other remote switch from our company)
b: Any button can be set up as On, Off, total on, total off according the above mentioned

- Six: technical indicators:
- 1, ultra-low-power design, standby current: 220V less than 30uA (less than 0.006W)
 - 2, operating voltage: AC180 ~ 250V (50/60Hz)
 - 3, operating frequency: 315 MHz 433 MHz 430 MHz 303 MHz
 - 4, remote control distance: set as the difference of matching remote controller
 - 5, standard-size form: Plate 86 * 86 * 30.5mm
 - 6, load power: resistive load 1000w, sensibility and capacitive load 400w
 - 7, ambient temperature -20 °C - 80 °C
 - 8, the sensitivity -102dB

- Special tips:**
1. Non-professionals will not be permitted to disassembly, One-line switch system will strictly prohibit to connect the direct line of fire and the zero line in the two wiring terminal at the same time, or else at your peril;
 2. Remote control battery installation: open the battery cover of the remote control, metal sheets for the positive (+), spring for the negative electrode (-), installed into the battery box of remote controller correspondly. Please attention that remote controller will be damaged. If anti-loaded the battery
 3. In the course of using the remote control, if the remote distance become near, lights dimmed, it needs to replace the battery. Battery specifications (12V 23A or 27A)

- Warranty:**
1. within one month from the date of Goods sold out, if performance failures occur, the product and the package need to maintain integrity, without scratching. we can replace with the same type of goods, (subject to inspection), but not include man-made damage.
 2. There are quality issues within one year warranty for free (except the box surface) except non-human and irresistible natural factors, The maintenance is for whole life, no parts warranty.
 3. Warranty services will be restricted to normally effective use. all man-made damage, disassembly, maintenance sign peeled off, improper using of overload, not within warranty.